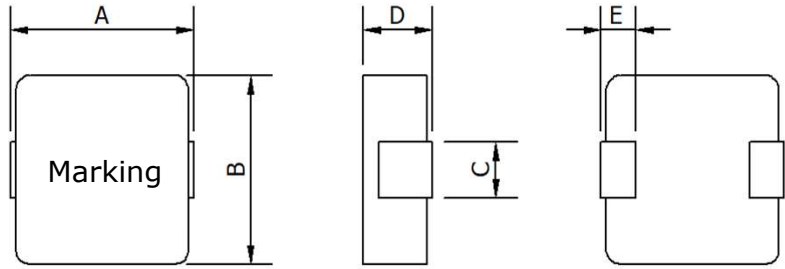


Dimensions

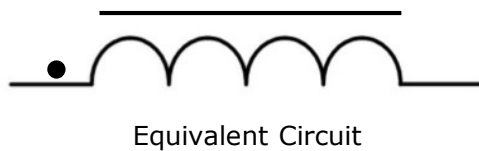


A	B	C	D	E
13.2±1.0 mm	12.6±0.3 mm	3.8±0.3 mm	5.0Max. mm	2.5±0.5 mm

Product Marking

Product Marking	3R3 (Inductance Code)
-----------------	-----------------------

Schematic Drawing



Electrical Properties

Properties		Value	Unit	Tol.	Test Conditions
Inductance	L	3.3	μH	±20%	100KHz 1.0V
Heat Rating Current	I _{rms}	16.0	A	Typ.	
Saturation Current	I _{sat}	32.0	A	Typ.	L 32.0A drop 25% MAX. @ 100KHz/1.0V
DC Resistance	R _{DC}	6.4	mΩ	Typ.	
DC Resistance	R _{DC}	9.2	mΩ	Max	

Operating temperature range: -45 to + 125 °C

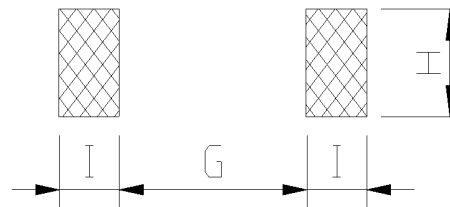
Storage condition:

Temperature Range: 0°C ~ 35°C; -40°C ~ 105°C (after PCB)

Humidity Range: 50% ~ 70% RH

Packaging: Taping : 500 Piece/reel

Recommended land pattern



G	5.20 mm (REF)
H	5.00 mm (REF)
I	4.60 mm (REF)