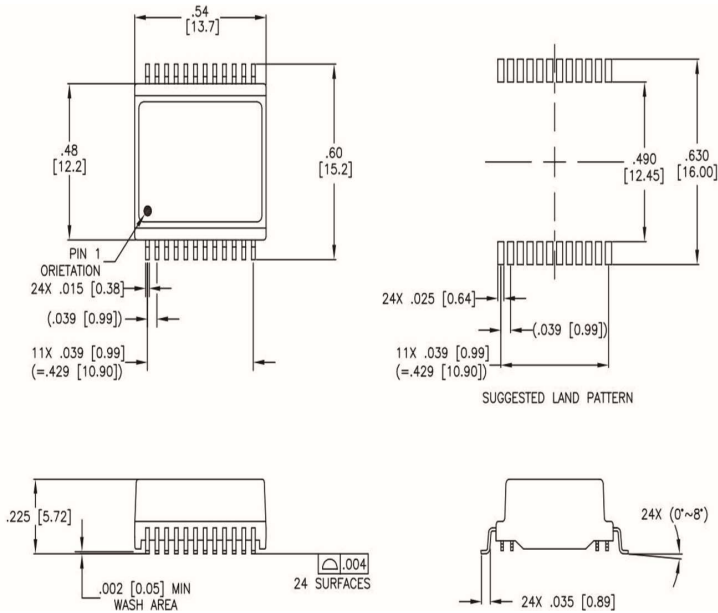
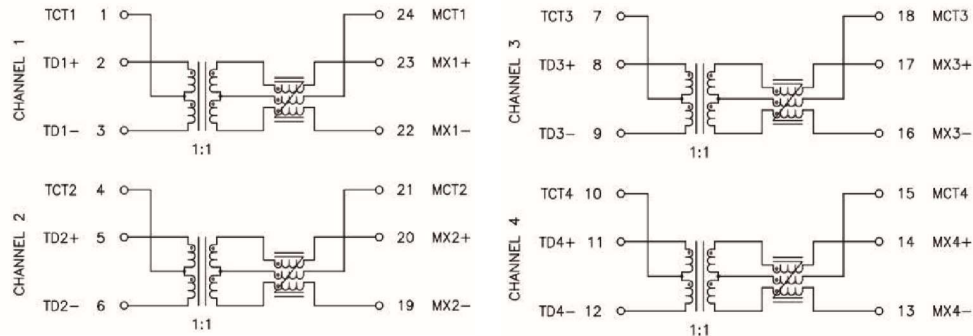


Dimensions



Schematic Drawing



Electrical Properties

Parameter	Specifications
Operating Temperature	0°C to 70 °C
Turns Ratio	1:1 ± 2%
Polarity	PER Schematic
Insertion Loss 100KHz	-3.0dB Max
Insertion Loss 1MHz - 500MHz	-1.0dB Max(-0.6dB Typ)
Return Loss 1000BT(Z OUT=100 ohm±15%) 1-40MHz	-16dB Min
Return Loss 1000BT(Z OUT=100 ohm±15%) 40-500MHz	-17 +10log(f/40) dB Min
Inductance(OCL) (Media Side, 0 to 70 °C)	120μH Typ (100KHz,0.1V)
Cross Talk, Adjacent Channels 1-100MHz	-40dB Min
Cross Talk, Adjacent Channels 100-500MHz	-30dB Min
Common Mode Rejection Ratio 1-100MHz	-35dB Min
Common Mode Rejection Ratio 100-300MHz	-30dB Min
Common Mode Rejection Ratio 300-500MHz	-25dB Min
Differential to Common mode Rejection (DCMR)1-250MHz	-30dB Min
Differential to Common mode Rejection (DCMR)250-500MHz	-22dB Min
Input-Output Isolation	1500Vrms Min at 60 Seconds

Note: f is frequency in MHz.

Ethernet Transformer/Choke.

Meets IEEE 802.3 Specification.

Comply with RoHS & Halogen Free requirements.

Storage condition: Temperature Range: -20°C ~ 125°C.



东莞善上电子有限公司
Sunshine Electronics Co.,LTD.

Description

Network Transformer

Part NO.

NO131614C18

Rev.

B

Page

1 of 1